

WRAP

ARCHITECTS JOHANNSEN + ASSOCIATES

CITY NORTH SUBSTATION ENERGISED



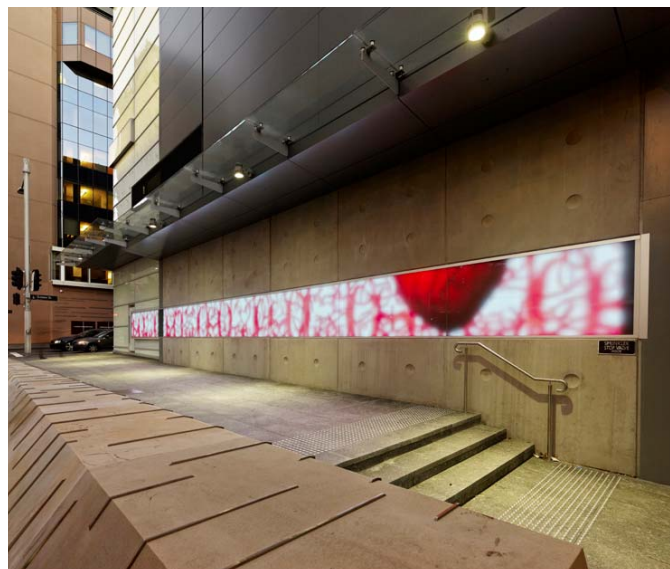
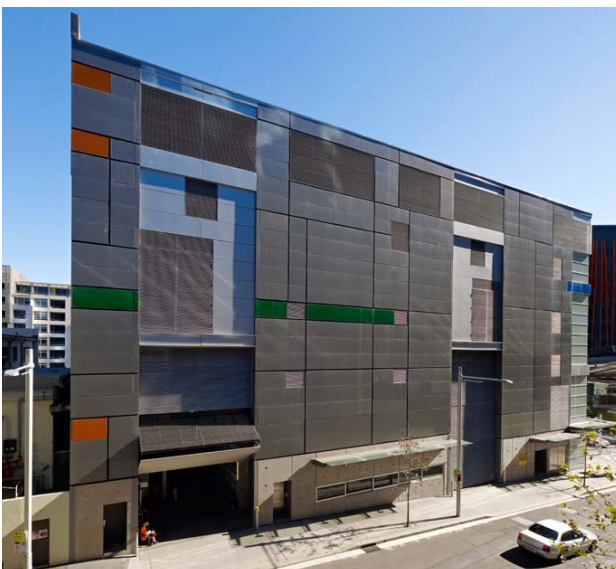
After an extensive period of technical installation, City North Substation became active in May 2010.

The AJA façade concept for City North Substation, on the corner of Sussex & Erskine Street, was selected for its bold, simple aesthetic in a limited design competition to clad the building envelope. Using a matrix of aluminium panels and coloured or frosted glass, the façade's Mondrian expression provides an abstract reference to the transmission of energy to the Sydney grid. This also provided an adaptable elevation system that could accommodate the complex façade requirements for louvres and access openings.

On both street frontages provision has been made for the display of static and digital art. Grid Gallery has recently opened as part of VIVID light festival and is Sydney's first public and web-based gallery space dedicated solely to the exhibition of digital art. For information on upcoming exhibitions, visit www.gridgallery.com.au

Top Left: Erskine Street façade
 Top Right: Aerial view towards Darling Harbour
 Bottom Left: Sussex Street façade
 Bottom Right: Grid Gallery

Image 1,3,4: Michael Nicholson Photography



KINGSGROVE SOCIAL HOUSING UNITS COMPLETED



Eleven new townhouses completed for HousingNSW in Kingsgrove.

The brief was to provide 70% of the townhouses as accessible by mobility impaired residents and to meet HNSW standards and codes for general housing. The material palette was based on robust, low maintenance finishes and detailing that would create a contemporary character.

Image: Keith McInnes

For further information please contact us on (02) 9360 9833
 or visit our website www.aja.com.au
 If you wish to UNSUBSCRIBE from WRAP please email news@aja.com.au



www.aja.com.au